

Elements of the educational environment.

Computer Lab.

More than 30 years ago, Smith System developed the first generation of furniture created expressly for computer labs. Today, computer learning has evolved and so has our furniture. Our head start in development has yielded a host of great options for computer labs – options that take into account the different ways computer learning is approached in schools.

For instance, Smith System computer lab solutions allow you to create environments suited to either group work or individual work. They also give you flexibility when it comes to making the environment stimulating or focused.

The advantages of Smith System computer labs extend beyond the lab itself: By matching the colors, finishes and other design cues elsewhere in the school, you can maintain consistency throughout.



Computer Desks

UXL Computer Station

NEW



UXL 30" x 90" Table Model XL3090GMEMPLTFL
Shown in Grey Mesh top/White edge/Platinum Fixed-height legs with glides.



UXL 30" x 60" Table Model XL3060TECAPLTAL
Shown in Tan Echo top/Apple edge/Platinum Push-button Adjustable height legs with glides. Accessorized with two optional Screens and, see pg. 102 to order. Shown with optional UXL Stacking Chairs in Apple, see pg. 13.



Wire Manager, Screens, and Hanging Accessories fit perfectly with the UXL Tables. See pg. 103 to order these and additional accessories.



Computer Desks



UXL Power Socket Model 17083 is durable and attaches securely to the work surface.



UXL Power Socket and UXL Wireway, shown in open position.

- Leg options:
- Straight fixed-height leg with glide, 29.5"h (standard leg, no upcharge)
 - * Straight fixed-height leg with caster, 29.5"h, add \$3
 - * Push-button adjustable height leg with glide, 27.5"-33.5"h, add \$28
 - * Push-button adjustable height leg with caster, 27.5"-33.5"h, add \$30
 - * Tapered fixed-height leg with caster, 29.5"h, add \$8
- * See pages 190-191 for detailed description and upcharge for optional leg sets

Optimizing the Post-Secondary Computer Lab Environment.
Computer labs have come a long way from the repurposed spaces they originally occupied. When purpose designed, computer labs are fully functioning learning environments.

With UXL Computer Stations, the designer can create the desired lab environment while keeping a look consistent with the furniture in the rest of the building: Work surface and edge molding colors, leg styles and accessories can match colors throughout the school. Accessories like a Wire Manager, Modesty Panel, Monitor Mount, Screen and Hanging Accessories increase functionality.

The UXL Computer Station's desktop measures 3/4" thick with high-pressure laminate work surface and offers a bullet-shaped edge molding that contributes to a lighter profile.

UXL Computer Station Color Choices

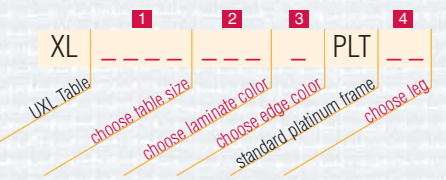
- 1 Choose Table Size: 24" x 30" (2430), 24" x 36" (2436), 24" x 48" (2448), 24" x 60" (2460), 24" x 72" (2472), 24" x 90" (2490), 30" x 30" (3030), 30" x 36" (3036), 30" x 48" (3048), 30" x 60" (3060), 30" x 72" (3072), 30" x 90" (3090), Corner (5STR).
- 2 Choose Table Laminate Color: Amber Cherry (AMC), Blond Echo (BEC), Cherry (CHE), Grey Mesh (GME), Grey Nebula (GNB), Golden Oak (GOK), Maple (MAP), New Age Oak (NAO), Pewter Mesh (PME), Tan Echo (TEC).
- 3 Choose Edge Color: Appleos (A), Blackos (B), Blueberryos (C), Burgundy (D), Clementineos (E), Forest Green (F), Fuchsia (G), Mintos (H), Navyos (I), Persian Blueos (J), Purple (K), Red (L), White (M), Yellow (N), Champagne (O), Platinum (P), Chocolate (Q).

Standard Frame Color: Platinum (PLT).

- 4 Choose Leg Type: Push-button adjustable height leg with glides (AL), Push-button adjustable height leg with casters (AC), Fixed-height leg with glides* (FL), Fixed-height leg with casters (FC), Tapered leg with casters (TL). *Standard leg set, no upcharge.

Model	Size	List Price
UXL Table Fixed-height Leg		
XL2430____PLTFL	24"d x 30"w	\$ 305.00
XL2436____PLTFL	24"d x 36"w	\$ 330.00
XL2448____PLTFL	24"d x 48"w	\$ 365.00
XL2460____PLTFL	24"d x 60"w	\$ 410.00
XL2472____PLTFL	24"d x 72"w	\$ 465.00
XL2490____PLTFL	24"d x 90"w	\$ 520.00
XL3030____PLTFL	30"d x 30"w	\$ 320.00
XL3036____PLTFL	30"d x 36"w	\$ 350.00
XL3048____PLTFL	30"d x 48"w	\$ 390.00
XL3060____PLTFL	30"d x 60"w	\$ 440.00
XL3072____PLTFL	30"d x 72"w	\$ 499.00
XL3090____PLTFL	30"d x 90"w	\$ 560.00
UXL Corner Table Fixed-height Leg		
XL5STR____PLTFL	30"d x 48"w	\$ 476.00

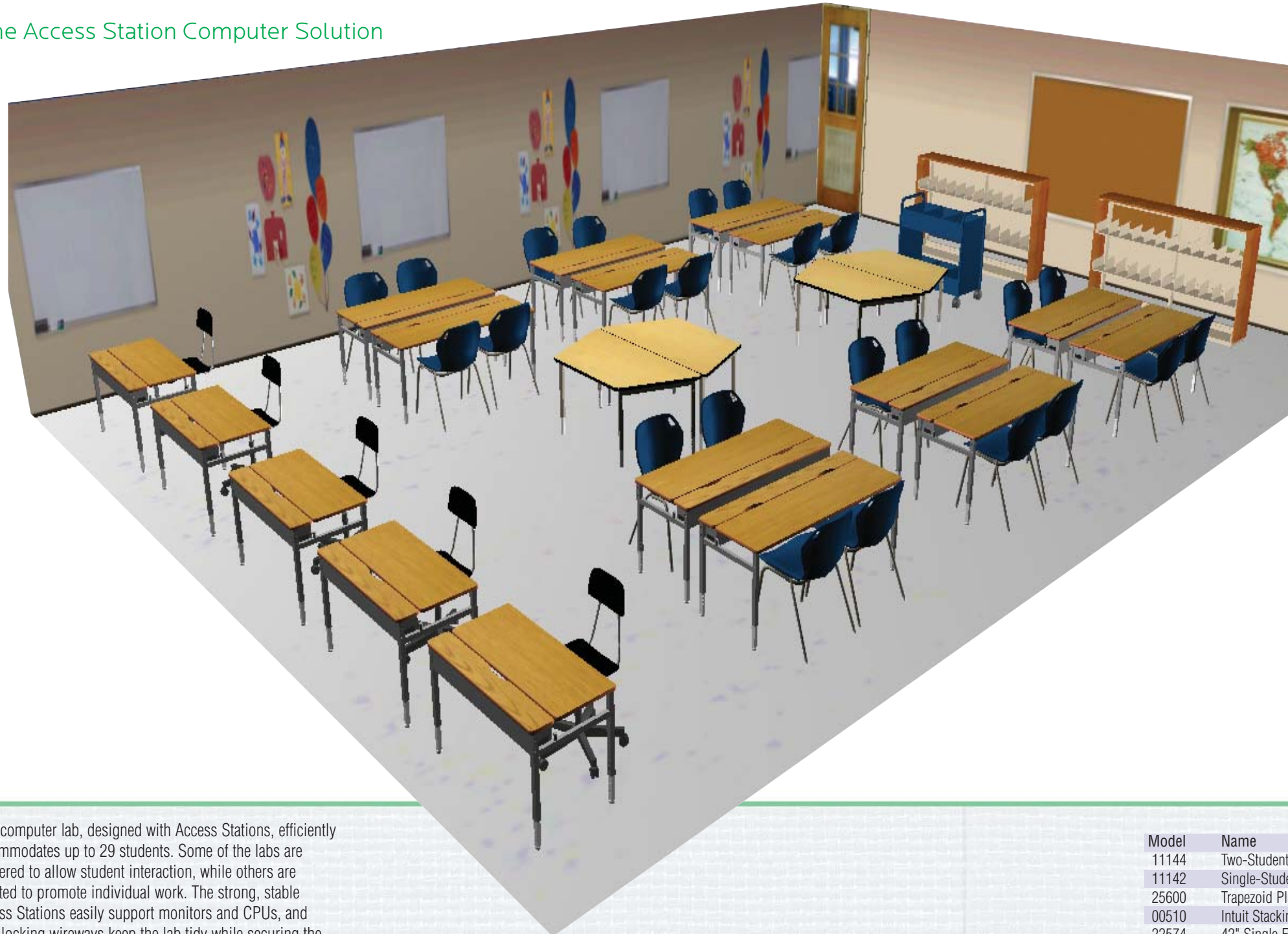
Model	List Price
Wire Management & Accessories	
17040 Wire Manager for 30" Wide Table	\$ 215.00
17041 Wire Manager for 36" Wide Table	\$ 240.00
17042 Wire Manager for 48" Wide Table	\$ 255.00
17043 Wire Manager for 60" Wide Table	\$ 290.00
17044 Wire Manager for 72" Wide Table	\$ 315.00
17045 Wire Manager for 90" Wide Table	\$ 365.00
17083 Power Socket (4 power plugs, 2 data plugs)	\$ 160.00



For color samples please turn to pages 192-193.



The Access Station Computer Solution



This computer lab, designed with Access Stations, efficiently accommodates up to 29 students. Some of the labs are clustered to allow student interaction, while others are isolated to promote individual work. The strong, stable Access Stations easily support monitors and CPUs, and their locking wireways keep the lab tidy while securing the computers' important wiring. This total solution allows the designer to match finishes and accent colors throughout the computer lab. And because it's a total solution from Smith System, there's also Smith System durability and functionality throughout.

Design your own computer lab fast and easy with Design U, the free online design tool at smithsystem.com. Design the room at your desk, preview it and share it with friends.



Model 11144 Two-Student Access Station
Model 17213 CPU holders (optional),
Model 17557 3" Casters (optional),
Model 00520 Intuit Chair (optional)



Model 11142 Single-Student Access Station
Model 17213 CPU holders (optional),
Model 11812 Brilliant Chair (optional)



Model 25600 Trapezoid Planner Activity Table



Model 00510 Intuit Chair



Model 22574 42" Single Face Library Divider Shelf - Starter*



Model 22584 42" Single Face Library Divider Shelf - Adder*



Model 21088 Everything Cart



Model 11811 Brilliant Adjustable Chair

Model	Name	Color	Quantity	Cost Per Unit
11144	Two-Student Access Station	Golden Oak/Clementine/Platinum	12	\$ 627.00
11142	Single-Student Access Station	Golden Oak/Clementine/Platinum	5	\$ 525.00
25600	Trapezoid Planner Activity Table	Maple/Black/Champagne	4	\$ 460.00
00510	Intuit Stacking Chair	Navy/Champagne	24	\$ 165.00
22574	42" Single Face Library Divider Shelf - Starter*	Cherry/Sand	2	\$ 499.00
22584	42" Single Face Library Divider Shelf - Adder*	Cherry/Sand	2	\$ 422.00
21088	Everything Cart	Navy	1	\$ 480.00
11811	Brilliant Adjustable Chair	Black	5	\$ 249.00

*Tops and ends ordered separately, see pgs. 170-177.

Total Cost \$ 19,516.00



Access Station



Two-Student Access Station Model 11145
Shown Maple top with Blueberry edge and Platinum frame.
Shown with two optional CPU Holders, Model 17213,
optional 3" casters, Model 17557 and optional Flat Panel
Mount, Model 17350 (see pgs. 142-143).

Shown with optional Intuit Sled Base Chairs, see pg. 22.



Three-Student Access Station Model 11146
Shown Grey Nebula top with Clementine edge and Champagne
frame. Shown with optional Intuit Chairs, see pg. 22.



Two-Student Access Station Model 11165
Shown in Cherry top with Charcoal edge and Black
frame. Show with optional CPU Holders, Model 17213.



Single-Student Access Station Model 11161
Optional CPU Holder, Model 17213. Shown Maple top
with Charcoal edge and Champagne frame.



Five-Sided Corner Access Station Model 11167
Shown Golden Oak top with Black edge and Black frame.



Lift-up door on wireway

Lift-up door on wireway
keeps wires tucked away
neatly, standard lock
ensures they stay that way.

Key lock



CPU Holder Model 17213
13"d x 7"w x 16"h Wt. 12 lbs.
List Price \$ 103.00



Add an Adjustable Keyboard
to 30" Access Station.
See page 143 to order.



Computer Desks

Desks with Secure Wire Storage.

What's locked up stays secure — and you can count on that with the Access Station. Unique cable ports with lift-up doors keep wires out of sight and out of the way — and a standard lock ensures they stay there. Choose from several configurations to create Single-, Two- and Three- Student stations.

- Chrome-plated lower legs resist scuffing.
- Work surface and wireway door are 1¹/₄" thick with high-pressure laminate surface and 3³/₈" thick bumper edge molding stapled every 8".
- 1" adjustable leveling glides provide stability on uneven floors.
- Adjustable table height from 22" up to 32" in 1" increments.
- Full-length locking 6" deep door has cord cutouts, providing easy access to wires.

Access Station Color Choices

Standard Smith System Colors:

Top	Edge	Frame
Grey Nebula ^{qs}	Navy	Navy
Grey Nebula ^{qs}	Blueberry	Platinum
Golden Oak ^{qs}	Black	Black
Cherry ^{qs}	Black	Black
Maple ^{qs}	Champagne	Champagne

For color samples and custom colors, please turn to pages 192-193.

Model	Description	Width	Wt.	List Price
24" deep Access Stations with 22"-32" height range				
11140 ^{qs}	Single-Student	30"w	56 lbs.	\$ 456.00
11141 ^{qs}	Single-Student	36"w	63 lbs.	\$ 491.00
11142 ^{qs}	Single-Student	42"w	70 lbs.	\$ 525.00
11143 ^{qs}	Two-Student	48"w	76 lbs.	\$ 549.00
11144 ^{qs}	Two-Student	60"w	93 lbs.	\$ 627.00
11145 ^{qs}	Two-Student	72"w	110 lbs.	\$ 701.00
11146 ^{qs}	Three-Student	84"w	126 lbs.	\$ 778.00
Model 11146 will not accommodate 3 CPU tower holders 24" deep models will not accommodate adjustable keyboards				
11147 ^{qs}	Five-Sided Corner	48"w	112 lbs.	\$ 810.00

Quick Ship
Ship in 5 days.
20 pieces maximum.

Model	Description	Width	Wt.	List Price
30" deep Access Stations with 22"-32" height range				
11160 ^{qs}	Single-Student	30"w	78 lbs.	\$ 484.00
11161 ^{qs}	Single-Student	36"w	85 lbs.	\$ 522.00
11162 ^{qs}	Single-Student	42"w	92 lbs.	\$ 561.00
11163 ^{qs}	Two-Student	48"w	98 lbs.	\$ 592.00
11164 ^{qs}	Two-Student	60"w	115 lbs.	\$ 678.00
11165 ^{qs}	Two-Student	72"w	132 lbs.	\$ 766.00
11166 ^{qs}	Three-Student	84"w	148 lbs.	\$ 856.00
Model 11166 will not accommodate 3 CPU tower holders				
11167 ^{qs}	Five-Sided Corner	48"w	134 lbs.	\$ 841.00
17557 ^{qs}	3" Caster/Stem Pack, set of 4-Planner Series only			\$ 113.00
-Limits leg height to 27 ³ / ₄ " to 30 ³ / ₄ "				



For a PDF of the specifications, visit smithsystem.com

Planner Lab



Planner Lab Model 24620
Shown in Maple top with Platinum edge and Platinum frame.
Shown with optional Intuit Sled Base chair, see pg. 22.



Order a Flat Panel Monitor Mount!
See page 143.



Planner Lab Station Model 24510
Shown in Grey Nebula top with Navy edge and Navy frame.
Shown with optional Flat Panel Monitor Mount, Model 17350
(see page 143 to order).



Planner Lab Station Model 24560
Shown in Cherry top with Charcoal edge and Black frame.
Shown with two optional CPU Holders, 17213, see pg. 142.



Planner Lab Station Model 24540
Shown in Maple top with Charcoal edge and Champagne frame.



Planner Lab Station Model 24610
Shown in Maple top with Mint edge and Platinum frame.
Shown with optional 3" casters, Model 17557 and optional CPU Holder, Model 17213 see pgs. 142-143.



Planner Lab Station Model 24600
Shown in Maple top with Charcoal edge and Champagne frame.



Computer Desks

Stronger Student Workstations.

Does your school have enough Planner Labs to optimize the e-learning environment? These lab-style desks are built specifically for that purpose. Solid H-frame construction ensures that these tables can support heavy equipment. Features include adjustable-height legs, a thick bumper edge for safety and a long-lasting, high-pressure laminate surface. Four colors are available to complement any classroom style.

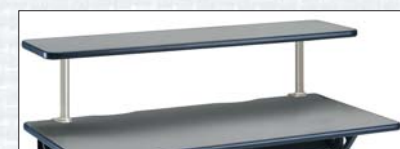
- Available in multiple lengths and widths, allowing you to create workstations for one, two and three students.
- 1 1/4" thick top with high pressure laminate surface and 3/8" thick bumper edge molding stapled every 8".
- Cord cutout at rear of work surface. 8" high x 3" deep wireway of 16-gauge steel with cable ports.

Planner Lab Color Choices

Standard Smith System Colors:

Top	Edge	Frame
Grey Nebula ^{qs}	Navy	Navy
Grey Nebula ^{qs}	Blueberry	Platinum
Golden Oak ^{qs}	Black	Black
Cherry ^{qs}	Black	Black
Maple ^{qs}	Champagne	Champagne

For color samples and custom colors, please turn to pages 192-193.



Add an optional Riser Shelf, Model 17648.

Model	Size	Wt.	List Price
24" deep Planner Lab Station			
24610 ^{qs}	24"d x 36"w x 22-32"h	56 lbs.	\$ 375.00
24500 ^{qs}	24"d x 48"w x 22-32"h	68 lbs.	\$ 417.00
24510 ^{qs}	24"d x 60"w x 22-32"h	80 lbs.	\$ 475.00
24520 ^{qs}	24"d x 72"w x 22-32"h	92 lbs.	\$ 523.00
24620 ^{qs}	24"d x 84"w x 22-32"h	104 lbs.	\$ 576.00
30" deep Planner Lab Station			
24530 ^{qs}	30"d x 30"w x 22-32"h	59 lbs.	\$ 383.00
24630 ^{qs}	30"d x 36"w x 22-32"h	65 lbs.	\$ 418.00
24540 ^{qs}	30"d x 48"w x 22-32"h	80 lbs.	\$ 450.00
24550 ^{qs}	30"d x 60"w x 22-32"h	95 lbs.	\$ 521.00
24560 ^{qs}	30"d x 72"w x 22-32"h	110 lbs.	\$ 577.00
24570 ^{qs}	30"d x 84"w x 22-32"h	125 lbs.	\$ 633.00

Quick^{qs} Ship
Ship in 5 days.
20 pieces maximum.

Model	Size	Wt.	List Price
Corner Station			
24600 ^{qs}	Four 30" sides (front and rear 25")	114 lbs.	\$ 626.00
Rectangular Riser Shelf			
17646 ^{qs}	12"d x 30"w x 12"h	34 lbs.	\$ 212.00
17647 ^{qs}	12"d x 36"w x 12"h	39 lbs.	\$ 234.00
17648 ^{qs}	12"d x 48"w x 12"h	50 lbs.	\$ 278.00
17649 ^{qs}	12"d x 60"w x 12"h	56 lbs.	\$ 319.00
17657 ^{qs}	12"d x 72"w x 12"h	78 lbs.	\$ 449.00
17659 ^{qs}	12"d x 84"w x 12"h	99 lbs.	\$ 571.00
17557 ^{qs}	*3" Caster/Stem Pack, set of 4		\$ 113.00

*Planner Series only. Limits desk height to 27³/₄" to 30³/₄"



For a PDF of the specifications, visit smithsystem.com

Planner Work Centers



Planner Work Center Model 24580
Shown in Maple top with Burgundy edge and Platinum frame.
Shown with optional Flat Panel Monitor Mounts, see pg. 143.



Planner Work Center Model 24580
Shown in Grey Nebula top with Blueberry edge and Platinum frame. Shown with optional Intuit Sled Base Chairs, see pg. 22.



Create a Trapezoid Work Center
Shown in Grey Nebula top with Navy edge and Navy frame.

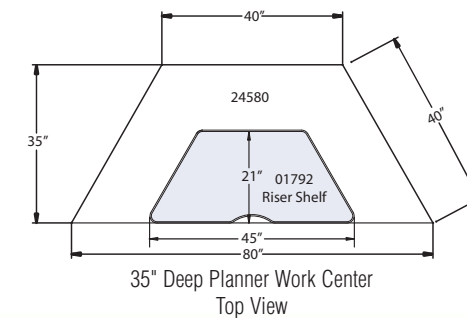
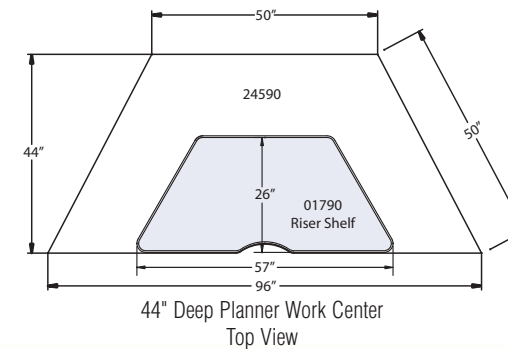


Shown with optional Flat Panel Monitor Mounts, Model 17350
(see pg. 143).

Trapezoid Riser Shelves
Add to the workstation's surface to increase work space. Legs adjust in one-inch increments.



Add an Adjustable Keyboard to any Planner Work Center. See page 143 to order.



Trapezoid Tables for Cost-Efficiency.

Work Centers comprised of two trapezoid stations are a cost-efficient way to create lab environments that group students for Team Learning. Strong construction allows the Planner Work Center to hold the weight of multiple computers and student books. Use these workstations individually or place them back to back to create cluster work centers. For more work space, simply add optional riser shelves.

- 1 1/4" thick top with high pressure laminate surface and 3/8" thick bumper edge.
- Adjustable table height from 22" up to 32" in 1" increments.
- Legs of 1 1/4" square, 12-gauge steel tubes with powdercoat finish.
- 1" adjustable leveling glides provide stability on uneven floors.
- Chrome-plated lower legs resist scuffing.

Planner Work Centers Color Choices

Standard Smith System Colors:

Top	Edge	Frame
Grey Nebula ^{qs}	Navy	Navy
Grey Nebula ^{qs}	Blueberry	Platinum
Golden Oak ^{qs}	Black	Black
Cherry ^{qs}	Black	Black
Maple ^{qs}	Champagne	Champagne

For color samples and custom colors, please turn to pages 192-193.

Model	Size	Wt.	List Price
Trapezoid Workstation — 40" x 40" x 40" x 80"			
24580 ^{qs}	35"d x 80"w x 22-32"h	125 lbs.	\$ 699.00
Trapezoid Workstation — 50" x 50" x 50" x 96"			
24590 ^{qs}	44"d x 96"w x 22-32"h	165 lbs.	\$ 881.00
Trapezoid Riser Shelf			
01792 ^{qs}	21"d x 45"w x 16-20"h	48 lbs.	\$ 308.00
01790 ^{qs}	26"d x 57"w x 16-20"h	63 lbs.	\$ 386.00

Quick Ship
Ship in 5 days.
20 pieces maximum.



Computer Desks

Flex Station



Add mobility when needed with 3" or 4" casters: choose two casters (moves like a wheelbarrow) or four.

Flex Station Model 01378
Shown in Maple top with Blueberry edge and Champagne frame. Optional Intuit Sled Base Chair, see pg. 22. Optional Flat Panel Monitor Mount, Model 17350 (see pg. 143).

Order casters separately, see pg. 143.



Flex Station Model 01383
Shown in Grey Nebula top with Purple edge and Platinum frame.



All Flex Stations come standard with modesty panel and wireway management.



Flex Station Model 01386
Shown in Grey Nebula top with Navy edge and Navy frame. Shown with optional Drawer Pedestal, Model 19173 and optional 3" dual wheel casters, Model 17553. Optional Brilliant Chair, see pg. 24.



Lockable end-cap/glide combination resists tampering.



Flex Station Model 01386
Shown in Cherry top with Charcoal edge and Black frame. Optional Brilliant Chair, see pg. 24.



Flex Station Model 01383
Shown in Grey Nebula top with Red edge and Platinum frame. Shown with optional CPU Holder, see pg. 142.



Computer Desks

Solutions for Laptop Learning.

The Flex Station is truly flexible, with an oversize top that's perfect for today's project learning environments. Choose from Single-Student or Two-Student stations available in five sizes.

- 3/8" thick bumper edge molding
- 1 1/4" thick top with high pressure laminate surface.
- For maximum stability, a 14-gauge steel mounting plate is welded to a Y-Leg made of 16-gauge steel tubing.
- Our patented backpack peg is on both the right and left leg, allowing backpacks to be hung under or outside the desk.
- Legs adjust from 24" to 32" high in 1" increments.

Flex Station Color Choices

Standard Smith System Colors:

Top	Edge	Frame
Grey Nebula ^{qs}	Navy	Navy
Grey Nebula ^{qs}	Blueberry	Platinum
Golden Oak ^{qs}	Black	Black
Cherry ^{qs}	Black	Black
Maple ^{qs}	Champagne	Champagne

For color samples and custom colors, please turn to pages 192-193.



For a PDF of the specifications, visit smithsystem.com

Model	Size	Wt.	List Price
24" deep Flex Station			
01374 ^{qs}	24"d x 36"w x 24-32"h	68 lbs.	\$ 322.00
01376 ^{qs}	24"d x 48"w x 24-32"h	88 lbs.	\$ 382.00
01377 ^{qs}	24"d x 60"w x 24-32"h	96 lbs.	\$ 455.00
01378 ^{qs}	24"d x 72"w x 24-32"h	106 lbs.	\$ 512.00

Model	Size	Wt.	List Price
30" deep Flex Station			
01383 ^{qs}	30"d x 36"w x 24-32"h	76 lbs.	\$ 359.00
01384 ^{qs}	30"d x 48"w x 24-32"h	98 lbs.	\$ 430.00
01386 ^{qs}	30"d x 60"w x 24-32"h	106 lbs.	\$ 503.00
01387 ^{qs}	30"d x 72"w x 24-32"h	120 lbs.	\$ 569.00

Flex Desks are protected by patents.

Quick^{qs} Ship
Ship in 5 days.
20 pieces maximum.

Model	Size	Wt.	List Price
Accessories			
Mobile Drawer Pedestal — box/box/file			
19173 ^{qs}	15 1/2"d x 22"w x 24 1/2"h	50 lbs.	\$ 294.00
Surge-Protected Power Strip			
17081 ^{qs}	6-outlet		\$ 59.00
17084 ^{qs}	10-outlet		\$ 138.00

Model	Size	Wt.	List Price
3" Dual-Wheel Caster Pack			
17553 ^{qs}	set of 4, 2 locking	3 lbs.	\$ 66.00

Model	Size	Wt.	List Price
4" Dual-Wheel Caster Pack			
17554 ^{qs}	set of 4, 2 locking	5 lbs.	\$ 97.00

Flexline™ Corner, Wave & Leonardo!



Leonardo! Left Hand Workstation Model 01560
Shown in Grey Nebula top with Forest Green edge and Platinum frame. Shown with optional Brilliant Chair, see pg. 25.

Our patented backpack peg is on both the right and left leg, allowing backpacks to be hung under or outside the desk.



Leonardo! Two-Student Workstation Model 01570
Shown in Grey Nebula top with Navy edge and Navy frame.
Shown with optional Brilliant Chair, see pg. 25.



Wave Workstation Model 01550
Shown in Grey Nebula top with Forest Green edge and Platinum frame.



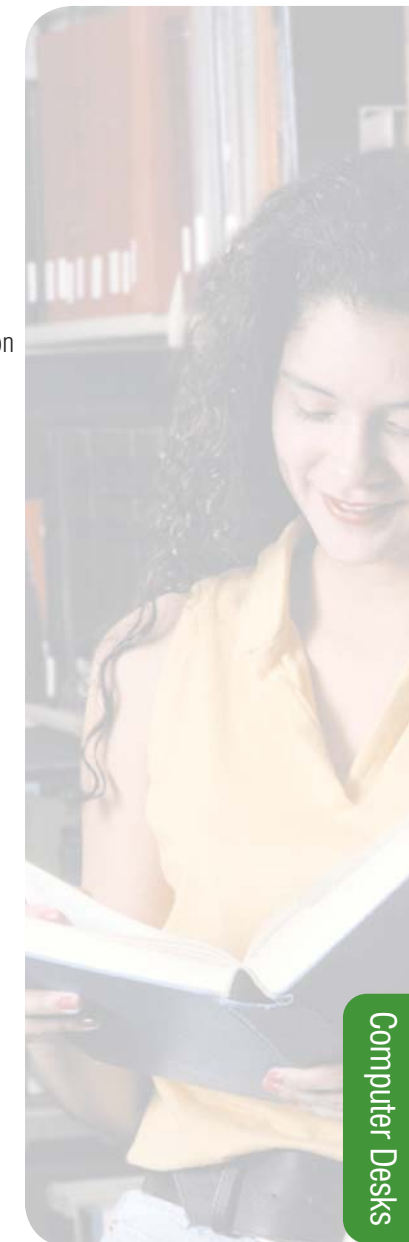
Wire cutouts and tilt down wireway keep cables orderly for tidier desk tops.



Model 01560 (left hand) & Model 01565 (right hand) shown side-by-side.



Flexline Corner Workstation Model 01379
Shown in Maple top with Champagne edge and Champagne frame.
Shown with optional Intuit Adjustable Chair, see pg. 23.



Designed for Computer Labs.

Flexline Leonardo's angled top in left and right hand models allows great classroom layouts with good sightlines. Use Leonardo! to form rows or back-to-back layouts: the unique top shape allows students to focus on both the computer and the instructor.

- Angled top area is 30" deep and 24" wide with a work area of 24" x 24".
- Cord cutout at rear of work surface.
- Leonardo! legs adjust from 24" to 32" high in 1" increments to accommodate all ages of students.
- Color-matched combination end cap/glide locks in place to resist tampering.
- 16-gauge steel modesty panel with tilt down wireway.

Flex Station Color Choices

Standard Smith System Colors:

Top	Edge	Frame
Grey Nebula ^{qs}	Navy	Navy
Grey Nebula ^{qs}	Blueberry	Platinum
Golden Oak ^{qs}	Black	Black
Cherry ^{qs}	Black	Black
Maple ^{qs}	Champagne	Champagne

For color samples and custom colors, please turn to pages 192-193.

Quick Ship
Ship in 5 days.
20 pieces maximum.



For a PDF of the specifications, visit smithsystem.com

Model	Size	Wt.	List Price
Wave top Flex Station			
01550 ^{qs}	30"d x 60"w x 24-32"h	100 lbs.	\$ 512.00
Leonardo! Left Hand Workstation			
01560 ^{qs}	30"d x 48"w x 24-32"h	93 lbs.	\$ 438.00
Leonardo! Right Hand Workstation			
01565 ^{qs}	30"d x 48"w x 24-32"h	93 lbs.	\$ 438.00
Leonardo! Two-Student Workstation			
01570 ^{qs}	30"d x 72"w x 24-32"h	120 lbs.	\$ 577.00
Flexline Corner Workstation (six 24" sides)			
01379 ^{qs}	34"d x 59"w x 24-32"h	85 lbs.	\$ 489.00

Model	Size	Wt.	List Price
Accessories			
Mobile Drawer Pedestal — box/box/file			
19173 ^{qs}	15 1/2"d x 22"w x 24 1/2"h	50 lbs.	\$ 294.00
Surge-Protected Power Strip			
17081 ^{qs}	6-outlet		\$ 59.00
17084 ^{qs}	10-outlet		\$ 138.00
3" Dual-Wheel Caster Pack			
17553 ^{qs}	set of 4, 2 locking	3 lbs.	\$ 66.00
4" Dual-Wheel Caster Pack			
17554 ^{qs}	set of 4, 2 locking	5 lbs.	\$ 97.00

Flexline™ Work Centers



Flexline Circle Center, Three-Student Half Circle Model 01590
Shown in Cherry top with Black edge and Black frame.

Cost-Efficient Learning Clusters.

Flexline Circle Centers fit neatly against walls or pair up to create full-circle work stations. A center cutout allows for neat wire management and keeps cords out of the way. Optional riser shelves increase the work space area by making room for computer peripherals and student materials



Three-Student Flexline Trapezoid Work Center Model 01340
Shown in Golden Oak top with Black edge and Black frame.

Our patented backpack peg is on both the right and left leg, allowing backpacks to be hung under or outside the desk.



Two-Student Riser Shelf Model 11500
(back-to-back).



Three-Student Flexline Trapezoid Work Center Model 01340
Shown in Grey Nebula top with Navy edge and Navy frame. Shown with optional Brilliant Adjustable Chairs, see pg. 25.

Model	Size	Wt.	List Price
Flexline Two-Student Half Circle 01580 _{qs}	36"d x 72"w x 24-32"h	115 lbs.	\$ 582.00
Two-Student Half Circle Riser Shelf, 24" radius 11500 _{qs}	24"d x 48"w x 12-22"h	64 lbs.	\$ 279.00
Flexline Three-Student Half Circle 01590 _{qs}	42"d x 84"w x 24-32"h	136 lbs.	\$ 764.00
Three-Student Half Circle Riser Shelf, 30" radius 11501 _{qs}	30"d x 60"w x 12-22"h	80 lbs.	\$ 397.00

Model	Size	Wt.	List Price
Accessories			
Mobile Drawer Pedestal — box/box/file 19173 _{qs}	15 1/2"d x 22"w x 24 1/2"h	50 lbs.	\$ 294.00
Surge-Protected Power Strip			
17081 _{qs}	6-outlet		\$ 59.00
17084 _{qs}	10-outlet		\$ 138.00
3" Dual-Wheel Caster Pack			
17553 _{qs}	set of 4, 2 locking	3 lbs.	\$ 66.00

Quick Ship
Ship in 5 days.
20 pieces maximum.

Flex Desks are protected by patents.

Clusters for Computer Learning.

If laptop computers have made their way into your classroom, the Flex Station helps you create an optimal learning environment. Trapezoid Flex Tables permit unique classroom configurations for group learning. Use them separately to accommodate three students or place two together to create a hexagon work area. Two sizes are available.

Model	Size	Wt.	List Price
Flexline Trapezoid Work Centers			
01340 _{qs}	35"d x 80"w x 24-32"h	153 lbs.	\$ 661.00
01345 _{qs}	44"d x 96"w x 24-32"h	208 lbs.	\$ 808.00
Riser Shelf for Trapezoid Work Centers			
01792 _{qs}	21"d x 45"w x 16-20"h	48 lbs.	\$ 308.00
01790 _{qs}	26"d x 57"w x 16-20"h	63 lbs.	\$ 386.00

Flexline Workcenter Color Choices

Standard Smith System Colors:

Top	Edge	Frame
Grey Nebula _{qs}	Navy	Navy
Grey Nebula _{qs}	Blueberry	Platinum
Golden Oak _{qs}	Black	Black
Cherry _{qs}	Black	Black
Maple _{qs}	Champagne	Champagne

For color samples and custom colors, please turn to pages 192-193.



Computer Desks



ADA Computer Desks



ADA Computer Desk Model 26597
Shown in Golden Oak top with Forest Green edge and Champagne frame. Shown with optional casters. Order separately. Shown with optional Library Adjustable Chair, see pg. 167 and optional Mobile Drawer Pedestal, see pg. 143.



ADA Computer Desk Model 26576
Shown in Maple top with Blueberry edge and Platinum frame. Shown with optional casters. Order separately. Shown with optional Adjustable Library Chair, see pg. 167.



ADA Computer Desk Model 26556
Shown in Grey Nebula top with Clementine edge and Champagne frame.



Hand crank is hidden under desk top.

Work surface adjusts 23"-32" high.

Note: Crank is toward modesty panel. Some handicap students may need assistance.



Pull-Out Keyboard Model 17620
Features 6" height adjustment with 10° tilt and 180° swivel with easy single control. 11" d x 25" w steel tray has padded palm rest.



Tower CPU Holder Model 17213
Heavy steel plate mounts under work surface. Adjusts 7"-10" w and 17"-21" h. Black steel tube frame with locks to hold tower in place.



Computer Desks

Access to E-Learning for Students with Disabilities.

Our ADA Computer desk is designed to enable students with disabilities to take part in computer learning. To help meet special height requirements, a hand crank on the underside of the work surface allows easy adjustment, so the desk can be fitted to the individual student. The strong work surface can support up to 200 lbs. and features a durable high-pressure laminate surface and a tough 3/8" thick bumper edge molding that's shaped for comfort.

- Tough 3/8" thick bumper edge molding, featuring a horizontal radius for comfort is stapled in place every 8".
- Cable tray and port holes in the modesty panel keep wires neatly organized.
- Lifts up to 200 lbs.
- Desktop can be raised up to 32", providing up to 30 3/4" of clearance below.

ADA Computer Desk Color Choices

Standard Smith System Colors:

Top	Edge	Frame
Grey Nebula ^{qs}	Navy	Navy
Grey Nebula ^{qs}	Blueberry	Platinum
Golden Oak ^{qs}	Black	Black
Cherry ^{qs}	Black	Black
Maple ^{qs}	Champagne	Champagne

For color samples and custom colors, please turn to pages 192-193.

Model	Size	Wt.	List Price
ADA Computer Desk			
26556 ^{qs}	24"d x 36" w x 23-32"h	89 lbs.	\$ 566.00
26576 ^{qs}	30"d x 36" w x 23-32"h	97 lbs.	\$ 603.00
26596 ^{qs}	24"d x 60" w x 23-32"h	134 lbs.	\$ 785.00
26597 ^{qs}	30"d x 60" w x 23-32"h	144 lbs.	\$ 848.00

Model	Size	Wt.	List Price
3" Dual-Wheel Caster Pack			
17553 ^{qs}	set of 4, 2 locking	3 lbs.	\$ 66.00
4" Dual-Wheel Caster Pack			
17554 ^{qs}	set of 4, 2 locking	5 lbs.	\$ 97.00

Pull-Out Keyboard For 30" ADA desks only.			
17620 ^{qs}	17"d x 22" w x 6" h	20 lbs.	\$ 245.00

Tower CPU Holder For 30" ADA desks only.			
17213 ^{qs}	13"d x 7" w x 16" h	12 lbs.	\$ 103.00

Quick^{qs} Ship
Ship in 5 days.
20 pieces maximum.

For ADA compliance use 30" deep work stations with minimum 36" width.



For a PDF of the specifications, visit smithsystem.com

CHOICE OF TOP COLORS AND TYPE

MODESTY PANELS

CABLE RACEWAYS TOO!

WIDE ADJUSTABLE
LEGS FOR
OUTSTANDING
STRENGTH

LEGI CAPS CAN'T
BE KICKED OFF

NON
MARRING
GLIDES



ACROBAT™

Desks

Computer Desks

If ever a line of desking had an apt name, it would be our Acrobat™ line. For, like its namesake, these desks combine strength and grace in a way that makes the near-impossible look effortless. Acrobat Teacher Desks and Computer Labs tuck the legs out of the way for easier ingress and egress. They manage wires inconspicuously with our integrated wireway. And they permit the work surface to take a number of user-friendly shapes. The Acrobat line is all about performance, in the classroom, computer lab or library.

 **SMITH SYSTEM™**
Furniture for inspired learning.™

WWW.SMITHSYSTEM.COM

Acrobat™ Workstations



Acrobat™ Rectangle Workstation Model 26380
Shown in Maple top with Blueberry edge and Champagne frame*. Shown with optional CPU Holder, Model 17213.
Shown with optional Intuit Sled Base Chairs, see pg. 22.

Order optional Flat Panel Monitor Mount, Model 17350.

Order casters separately.

Order an optional Flat Panel Monitor Mount, Model 17353.



Acrobat Rectangle Workstation Model 26443
Shown with optional Riser Shelf, Model 17649 (see pg. 143).
Shown with optional Brilliant Adjustable Chair, see pg. 24.



Acrobat Rectangle Workstation Model 26526
Shown in Maple top with Charcoal edge and Champagne frame*.

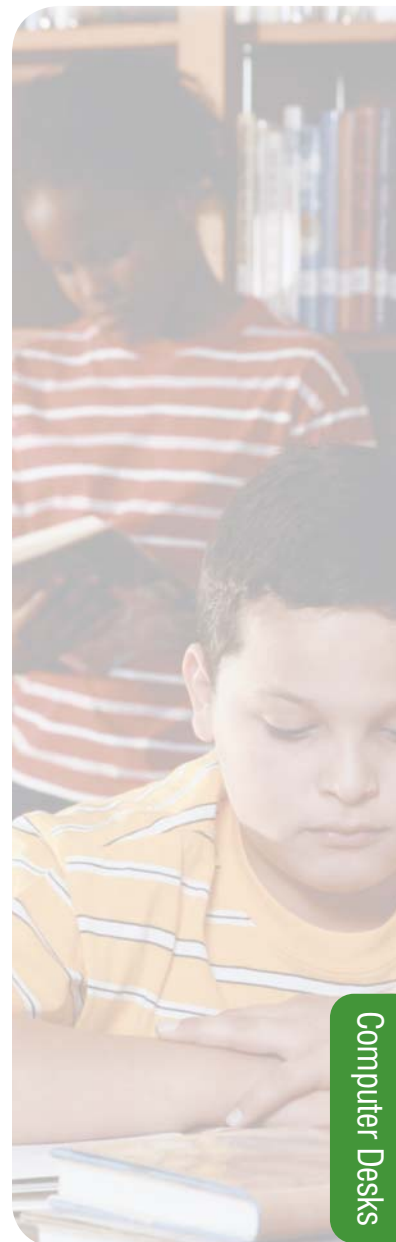


Acrobat Rectangle Workstation Model 26393
Shown in Maple top with Mint edge and Champagne frame.
Shown with optional 3" casters, Model 17553 and optional Flat Panel Mount, Model 17350.

Shown with optional Intuit Adjustable Chair, see pg. 23.



Acrobat Rectangle Workstation Model 26413
Shown in Cherry top with Charcoal edge and Black frame. Shown with optional Intuit Sled Base Chair, see pg. 22.



Computer Desks

Computer Workstations for Schools.

The strong, stable Acrobat™ workstation is available in nine different sizes, making it a natural choice for almost any computer lab. It features a built-in wireway in the modesty panel for cable management. Its distinctive leg design makes ingress and egress easier for the students. And Acrobat Workstations can be arranged and rearranged to fit your changing needs.

- Cable tray and port holes in the modesty panel keep wires neatly organized.
- Strong 10" deep double-wall legs are 18-gauge steel with radius corners.
- The base is 16-gauge steel, color matched to the legs, featuring lock-in-place end caps and adjustable leveling glides.

Acrobat Workstation Color Choices

Standard Smith System Colors:

Top	Edge	Frame
Grey Nebula ^{qs}	Navy	Navy
Grey Nebula ^{qs}	Blueberry	Platinum
Golden Oak ^{qs}	Black	Black
Cherry ^{qs}	Black	Black
Maple ^{qs}	Champagne	Champagne

For color samples and custom colors, please turn to pages 192-193.

Model	Size	Wt.	List Price
Acrobat Rectangle Workstation			
26383 ^{qs}	24"d x 30"w x 24-36"h	82 lbs.	\$ 541.00
26393 ^{qs}	24"d x 36"w x 24-36"h	88 lbs.	\$ 575.00
26403 ^{qs}	24"d x 48"w x 24-36"h	100 lbs.	\$ 627.00
26413 ^{qs}	24"d x 60"w x 24-36"h	113 lbs.	\$ 693.00
26380 ^{qs}	24"d x 72"w x 24-36"h	121 lbs.	\$ 757.00
26423 ^{qs}	30"d x 30"w x 24-36"h	88 lbs.	\$ 585.00
26433 ^{qs}	30"d x 36"w x 24-36"h	95 lbs.	\$ 618.00
26443 ^{qs}	30"d x 48"w x 24-36"h	110 lbs.	\$ 679.00
26453 ^{qs}	30"d x 60"w x 24-36"h	125 lbs.	\$ 747.00
26526 ^{qs}	30"d x 72"w x 24-36"h	121 lbs.	\$ 834.00

Model	Size	Wt.	List Price
Accessories			
Mobile Drawer Pedestal — box/box/file			
19173 ^{qs}	15 1/2"d x 22"w x 24 1/2"h	50 lbs.	\$ 294.00
Surge-Protected Power Strip			
17081 ^{qs}	6-outlet		\$ 59.00
17084 ^{qs}	10-outlet		\$ 138.00
3" Dual-Wheel Caster Pack			
17553 ^{qs}	set of 4, 2 locking	3 lbs.	\$ 66.00
Flat Panel Mount w/tilt			
17350 ^{qs}		6 lbs.	\$ 135.00



For a PDF of the specifications, visit smithsystem.com

Quick Ship
Ship in 5 days.
20 pieces maximum.

smithsystem.com | 800.328.1061

Accessories

Secure Transport and Storage.

Constructed of 18-gauge steel, our new Laptop Cart rolls smoothly on 4" casters. It stores, transports and charges 15 laptops. Much more than a shelf on wheels, our Laptop Cart offers great functionality and security as well as convenience — you can use it to recharge the laptops' batteries. The cart locks for security and offers ventilation holes to prevent damaging heat from building up inside.

- Platinum powdercoat with Black rubber mat.
- Locking front doors swing open a full 270 degrees to make loading and unloading the laptops easier.
- Ventilation holes prevent damaging heat from building up inside.
- 14 removable dividers.
- 10' extension cord
- Two 1 1/2" grommet holes on top shelf and one in the rear access panel.
- Locking rear electrical access panel.



Model	Size	Wt.	List Price
Laptop Cart			
26100 ^{qs}	22"d x 36"w x 40"h	140 lbs.	\$1,292.00

Casters

For Flex Series, Acrobat Desks & ADA Desks.



Casters have 3/16" x 18 threaded stem.

4 pack of 3"
dual wheel casters, Wt. 3 lbs.
Model 17553^{qs}
Price \$ 66.00

4 pack of 4"
dual wheel casters, Wt. 5 lbs.
Model 17554^{qs}
Price \$ 97.00

*For Planner Series use

Model 17557 black only. 3" dual wheel casters w/stem pack limits desk height to 27 3/4" to 30 3/4".

Surge Protectors

- Surge Protection up to 720 joules
- Illuminated On/Off switch and Diagnostic Indicator
- Integrated 15-amp breaker
- Integrated keyhole slots on back for optional wall mount

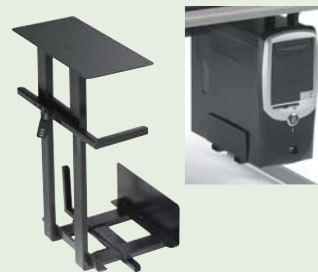


6 Outlet Surge Protector
Model 17081^{qs}
4 ft. heavy duty cord
List Price \$ 59.00



10 Outlet Surge Protector
Model 17084^{qs}
15 ft. heavy duty cord
List Price \$ 138.00
(Has surge protection and noise filter.)

CPU Holders



Tower CPU holder
Heavy steel plate mounts under work surface. Adjusts 7-10"w and 17-21" high. Black steel tube frame with locks to hold tower in place.

13"d x 7"w x 16"h, Wt. 12 lbs.
Model 17213^{qs}
List Price \$ 103.00
Note: 3-student stations will not accommodate three CPU tower holders.

Pull-out Drawers



Pull-out Knee Drawer

Black molded drawer mounts under work surface. Molded pencil area 19"d.

16"d x 23"w x 2" h
Model 17342^{qs}
List Price \$ 43.00

Side Book Box Laptop Holder

For 36" wide models minimum.



Black powdercoat finish. Special order Champagne and Platinum.

12"d x 8"w x 16"h, Wt. 10 lbs.
Model 17194^{qs}
List Price \$ 96.00

Drawer Cabinets



6 Drawer Cabinet
with locks, 2" drawers.
21 1/2"d x 15 1/2"w x 22"h.
Color Choices: Black or Champagne. Wt. 54 lbs.

Model 09350^{qs}
List Price \$ 544.00



12 Drawer Cabinet
with locks, 2" drawers.
21 1/2"d x 15 1/2"w x 39"h.
Color Choices: Black or Champagne. Wt. 104 lbs.

Model 09450^{qs}
List Price \$ 706.00

Deluxe Tabletop Lectern



Plastic laminate top with pencil groove and large storage area for reference materials.
Color Choices: Black top with choice of Black, Navy or Champagne frame.

20"d x 18"w x 13"h, Wt. 21 lbs.
Model 04619^{qs}
Price \$ 179.00

Drawer Pedestal



Box / Box / File

Cabinets have steel welded construction with rounded corners and gang lock. Drawers have flush pulls and ball bearing race slides. All mobile units have 2" dual wheel casters. Colors: Champagne, Platinum, Black or Navy.
15 1/2"d x 22"w x 24 1/2"h, Wt. 50 lbs.



File / File

Box/Box/File
Model 19173^{qs}
List Price \$ 294.00

File/File
Model 19172^{qs}
List Price \$ 296.00

Flat Panel Monitor Mounts



Flat Panel Mount w/tilt

Wt. 6 lbs.

Model 17350^{qs}
List Price \$ 135.00



Flat Panel Mount w/tilt & swivel

Wt. 7 lbs.

Model 17351^{qs}
List Price \$ 199.00



Flat Panel Mount w/swing arm, tilt & swivel
Wt. 8 lbs.

Model 17352^{qs}
List Price \$ 255.00



Flat Panel Mount Clamp-on w/swing arm, tilt & swivel
Wt. 11 lbs.

Model 17353^{qs}
List Price \$ 267.00

Rectangular shelves for Flexline, Planner, Acrobat and ADA Desk



Tough powdercoat Platinum finish on poles. Shelves have 1 1/4" thick top with high pressure laminate surface and 3/8" thick bumper edge molding stapled every 8". Shelf rests on work surface, clamps provided to secure shelf.

Model	Description	Wt.	List Price
17645 ^{qs}	12"d x 24"w x 12"h	31 lbs.	\$ 188.00
17646 ^{qs}	12"d x 30"w x 12"h	34 lbs.	\$ 212.00
17647 ^{qs}	12"d x 36"w x 12"h	39 lbs.	\$ 234.00
17648 ^{qs}	12"d x 48"w x 12"h	50 lbs.	\$ 278.00
17649 ^{qs}	12"d x 60"w x 12"h	56 lbs.	\$ 319.00
17657 ^{qs}	12"d x 72"w x 12"h	78 lbs.	\$ 449.00
17659 ^{qs}	12"d x 84"w x 12"h	99 lbs.	\$ 571.00

Adjustable Keyboards



Features 6" height adjustment with 10° tilt and 180° swivel with easy single control. 11"d x 25"w steel tray has padded palm rest. 17"d x 22"w x 6"h
Wt. 20 lbs.

Model 17620^{qs}
List Price \$ 245.00